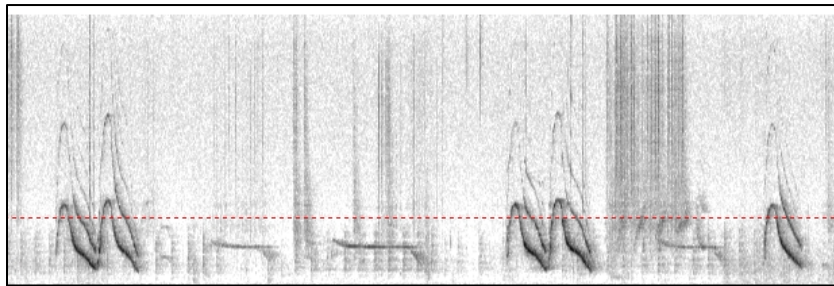


Name: _____

Date: _____

How to “read” dolphin

Dolphins may very well have their own names called ‘signature whistles’. Scientists cannot easily hear the differences between whistles so they use pictures called *spectrograms* to see the sounds. As a dolphin whistles, a line is drawn on a graph. If the dolphin makes a high squeaky sound the line goes up. If the dolphin makes a low deeper sound the line goes down. As time moves on the line that is drawn makes a shape. Scientists call this a *contour*. Here are examples of a real dolphin signature whistles drawn using spectrograms.



- 1) These are two dolphins making their signature whistles back and forth. Can you circle one of the dolphin’s whistles and box the other dolphin’s whistle?



- 2) Your turn to speak dolphin. Use the graph above to make your own signature whistle. Have a classmate make their signature whistle in reply.
- 3) Do your whistles look similar or different? How do you think dolphins avoid confusion over which whistle belongs to which dolphin?
- 4) What do you think your whistle would sound like if a dolphin made it?